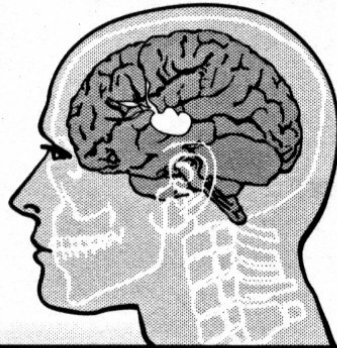


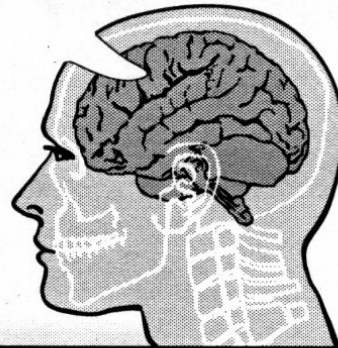
**BRAIN INJURY  
ASSOCIATION  
OF PEEL & HALTON**

2155 Leanne Blvd - Suite 240, Mississauga Ontario - L5K 2K8  
Tel: 905.823.2221 1.800.565.8594 Fax: 905.823.9960 E-mail: [biaph@biaph.com](mailto:biaph@biaph.com) [www.biaph.com](http://www.biaph.com)

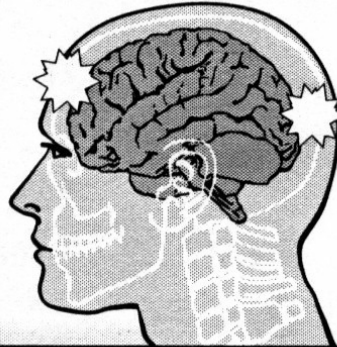
Types of Brain Injuries



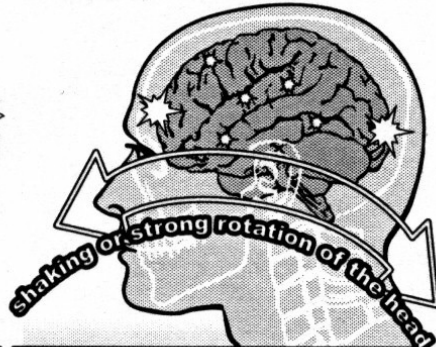
**Aneurysm**  
An abnormal blood-filled dilatation of a blood vessel and especially an artery resulting from disease of the vessel wall



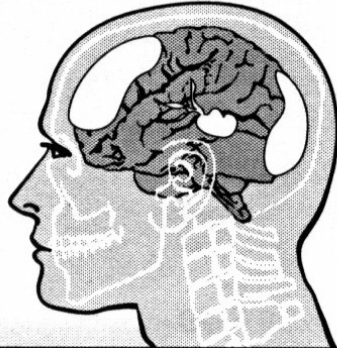
**Laceration**  
1. A jagged wound or cut.  
2. The process or act of tearing tissue.



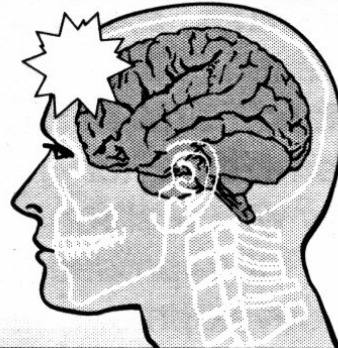
**Contrecoup**  
Injury to a part opposite the site of the primary injury, as an injury to the skull opposite the site of a blow.



**Diffuse Injury**  
The situation where the injury is spread throughout the brain. Diffuse injuries are typically microscopic.



**Hematoma**  
A localized swelling filled with blood resulting from a break in a blood vessel.



**Concussion**  
A concussion can be caused by direct blows to the head, gunshot wounds, violent shaking of the head, or force from a whiplash type injury.